



Integrated Gas Technologies

GAS FILTER

The upper cup contains the gas filter. Replacement of the gas filter requires a wrench and is recommended done by a professional gas fitter.

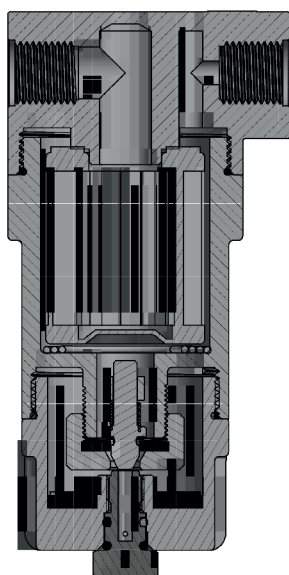
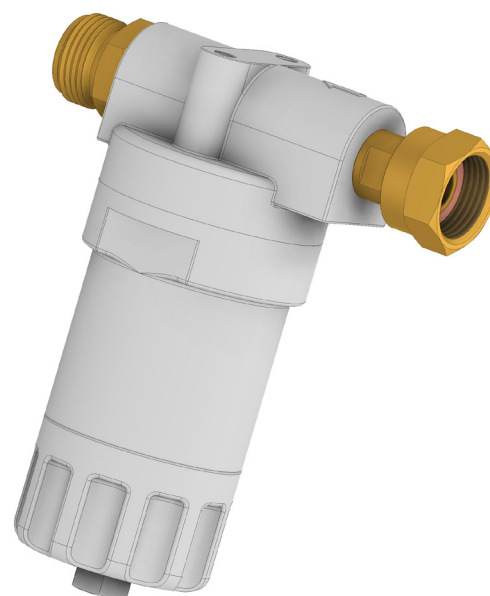
The lower cup contains a gas pad that absorbs the heavy-ends and dirt. The bottom screw is loosened first and closes the inbuilt check valve and purges the gas pressure from the lower cup.

Then the lower cup can be unscrewed by hand and the gas pad can be exchanged. This is done regularly.

This procedure safeguards the end user against unwanted release of high-pressure gas from the gas hose and upper filter unit.

The check valve allows the exchange of the gas pads by the end-user without first emptying the complete gas system.

The use of a gas filter extends the lifetime of the change-over valve/regulator and ensures trouble-free use.



Item No.	Inlet	RVS 8mm
A900-F007	RVS 8mm	RVS 8mm
A900-F008	RVS 10mm	RVS 10mm
A900-F009	G1/3" Lh Male	G1/4" Lh Nut
A900-F010	M20x1,5 Male	M20x1,5 Nut
A900-F011	G5 Kombi	G12 KLF
A900-F999		Replacement filter
A900-F992		10 pcs gas pads

RVS8 mm = 8mm compression fitting to En8434
RVS 10mm = 10 mm compression fitting to En8434

Working Pressure: 16 bar

Filter Unit: Absorb 99% of dirt and heavy ends.

Gas pad in a lower cup: Cotton pad that absorbs the liquid residue and dirt.

As a global gas regulator manufacturer IGT takes pride in product quality & durable products. We support UN Sustainable Development Goals with a special focus on 3, 12 & 13. An extended product lifetime reduces the environmental footprint.



INTEGRATED GAS TECHNOLOGIES ApS
Gydevang 39-41, 3450 Allerød Denmark.
E-Mail: sales@igt-lpg.com - Tel: +45 45 76 99 21



Scan Qr Code to Visit Our Website
www.igt-lpg.com